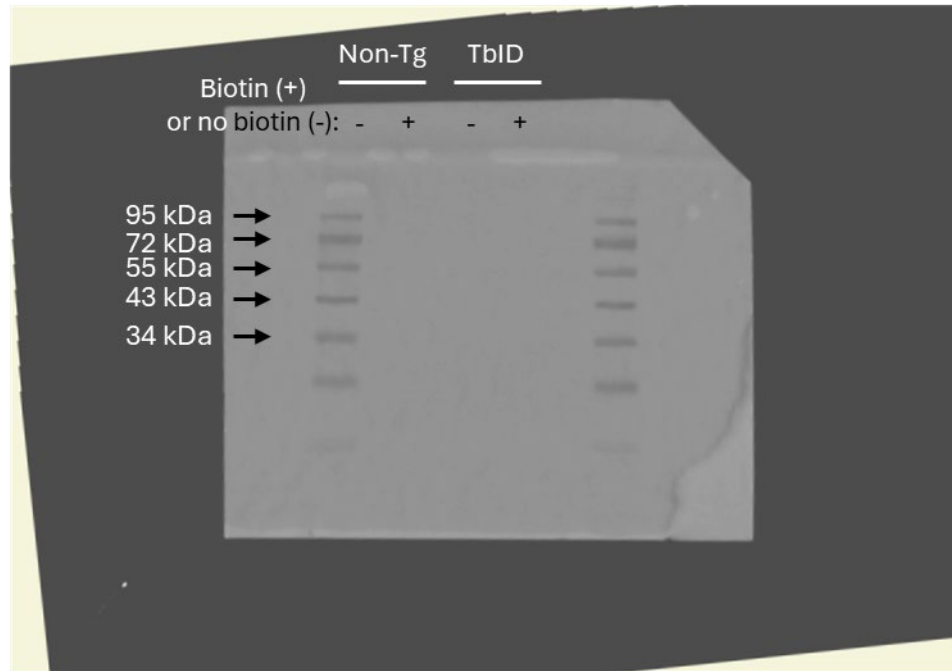


Colorimetric for SA-HRP blot



*Chemiluminescence
for SA-HRP blot*



Figure 1 – figure supplement 1, Source Data 1. Original membrane images corresponding to **Figure 1 – figure supplement 1**. Lanes contain total protein from biotin-depleted non-transgenic/Non-Tg animals or TurboID/TbID worms either treated with ‘no biotin’ (-) or ‘biotin’ (+). *C. elegans* lines and treatment strategies are annotated on the top of each image. Biotinylated proteins were visualised using chemiluminescence via streptavidin-horseradish peroxidase (SA-HRP). Leftmost lane contains protein ladder (shown in the ‘colorimetric’ image). Molecular weights for protein ladder standards are annotated on the left side of each image (in kDa). Relevant bands are annotated in orange.